

MEMORANDUM

February 20, 2024

To: Representative Chris Deluzio
Attention: Caroline Lowe

From: Ben Goldman, Coordinator, Analyst in Transportation Policy, [REDACTED]
[REDACTED]
Molly S. Cox, Geospatial Information Systems Analyst, [REDACTED]

Subject: **Pennsylvania's 17th Congressional District: Population Near Freight Rail Lines**

This memorandum responds to your request for information about the number of people in the Pennsylvania 17th Congressional District who live within one mile and within five miles of a freight rail line.

To respond to your request, CRS used the North American Rail Lines dataset published by the Bureau of Transportation Statistics, and block-level 2020 Decennial Census data published by the U.S. Census Bureau.

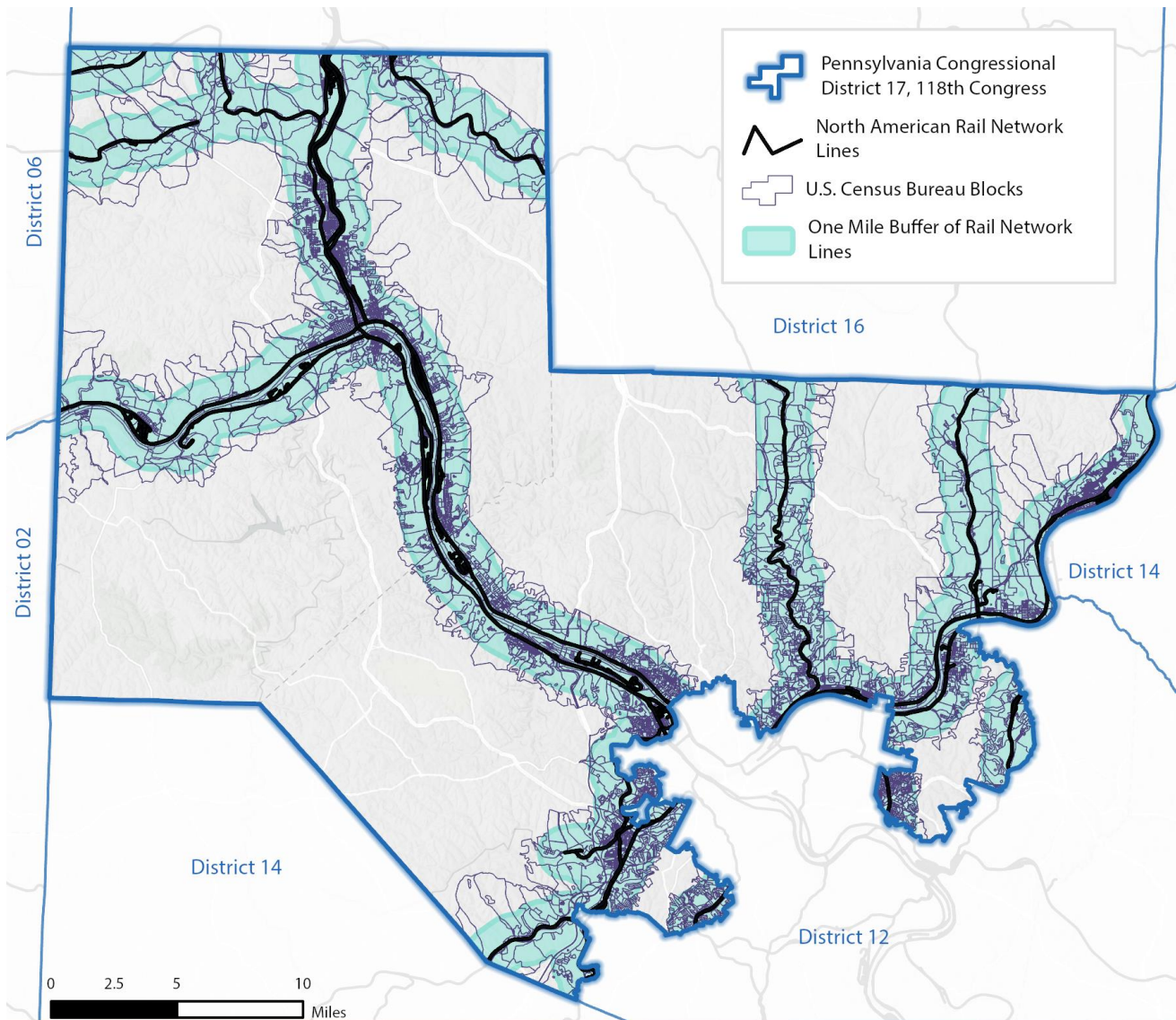
The resulting maps are attached with this memorandum. Population totals for each distance band can be found in **Table 1** below.

Table 1. Population of Pennsylvania's 17th Congressional District Living Within 1 Mile or 5 Miles of a Freight Rail Line

Category	Population	Percent of Total
All Residents	764,864	100%
Residents within 1 mile of a freight rail line (est.)	364,888	48%
Residents within 5 miles of a freight rail line (est.)	723,926	95%

Source: Department of Transportation, Bureau of Transportation Statistics, "North American Rail Network Lines," <https://geodata.bts.gov/datasets/usdot::north-american-rail-network-lines/explore>, and Department of Commerce, U.S. Census Bureau, "2020 TIGER/Line® Shapefiles: Blocks (2020)," <https://www.census.gov/cgi-bin/geo/shapefiles/index.php?year=2020&layergroup=Blocks+%282020%29>.

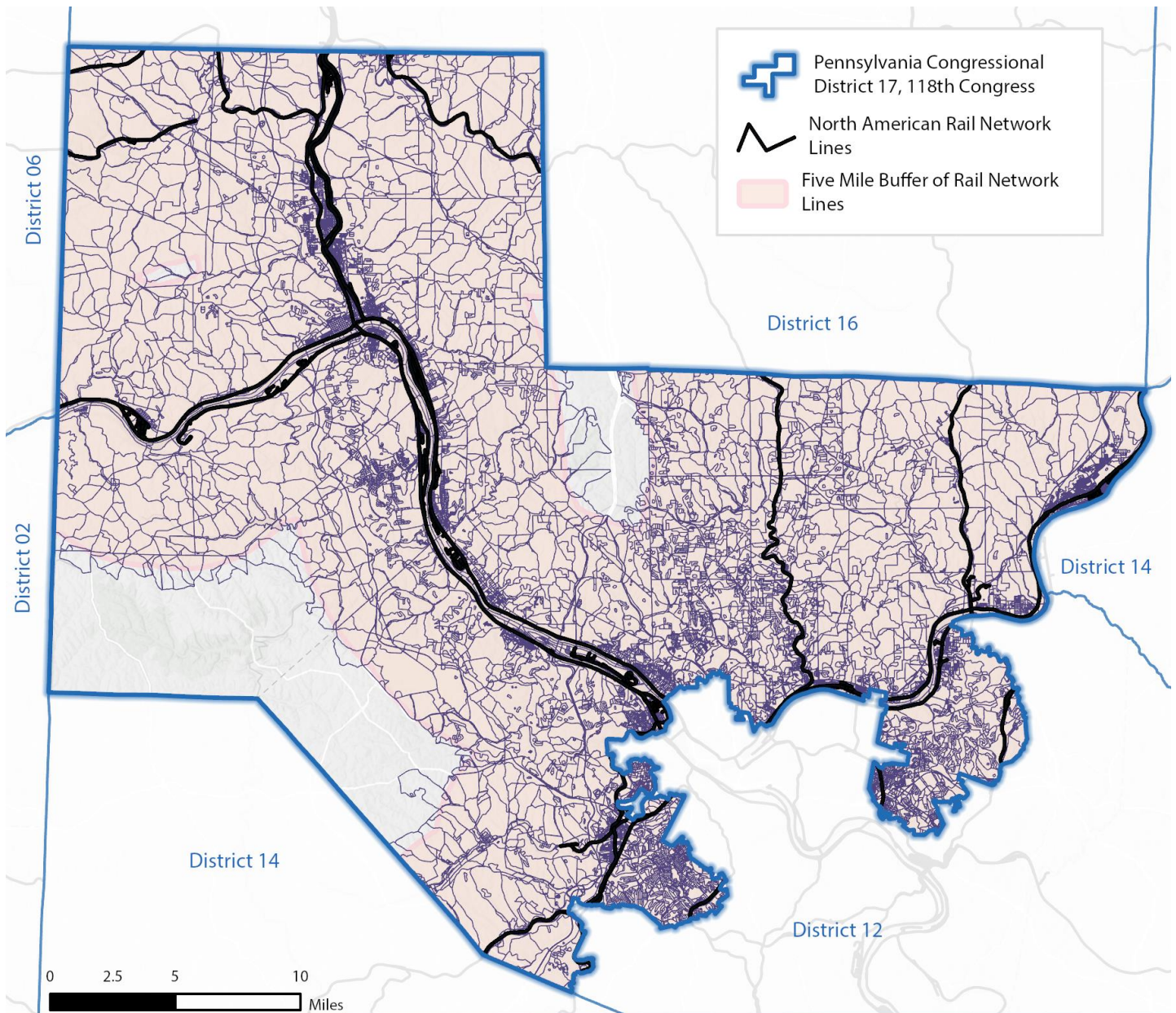
Notes: Excludes abandoned rail lines. Excludes the passenger-only Pittsburgh "T" light rail system. Census blocks that fall partially within the 1-mile or 5-mile buffers have had their populations adjusted according to the percentage of land area within the buffer zones.



U.S. Census Bureau Blocks Located within One Mile of a Railway in Pennsylvania Congressional District 17 (PA-17)

Created by CRS using data from the U.S. Census Bureau, U.S. Department of Transportation, and ESRI.
Date of Map: 02/16/2024





U.S. Census Bureau Blocks Located within Five Miles of a Railway in Pennsylvania Congressional District 17 (PA-17)

Created by CRS using data from the U.S. Census Bureau, U.S. Department of Transportation, and ESRI.
Date of Map: 02/16/2024

